

Flower Bound

QUILT DESIGNED BY *AGFstudio*

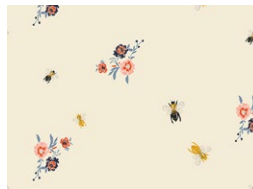


the *Season* of **TRIBUTE**

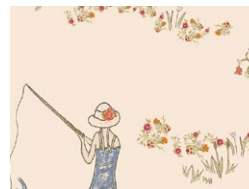
chapter two	TITLE <i>Garden of Opulence</i>	DESIGNER BARI J.
-------------	---------------------------------	-------------------------



TRB2000
BOTANIST'S ESSAY TWO



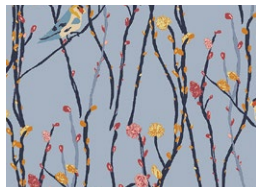
TRB2001
BEES & BITS TWO



TRB2007
FAWN DAY TWO



TRB2011
GARDEN ROCKET TWO



TRB2004
ILLUSIONIST VINE TWO



TRB2005
FLOWERPOP TWO



TRB2009
PANACHE PROFUNDO TWO



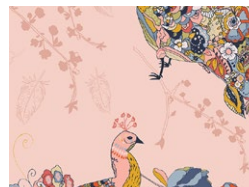
TRB2003
PAINTED LADIES TWO



TRB2006
RIPPLES TWO



TRB2010
FRENCH SAMPLER TWO



TRB2002
PEACOCK WALTZ TWO



Flower Bound

FINISHED SIZE | 60" x 69"

FABRIC REQUIREMENTS

Fabric A	TRB2000	$\frac{3}{8}$ yd.
Fabric B	TRB2001	$\frac{1}{2}$ yd.
Fabric C	TRB2007	$\frac{3}{8}$ yd.
Fabric D	TRB2011	$\frac{3}{8}$ yd.
Fabric E	TRB2004	$\frac{3}{4}$ yd.
Fabric F	TRB2005	$\frac{3}{8}$ yd.
Fabric G	TRB2009	$\frac{3}{8}$ yd.
Fabric H	FE502	$\frac{1}{4}$ yd.
Fabric I	TRB2003	$\frac{3}{8}$ yd.
Fabric J	TRB2006	$\frac{3}{8}$ yd.
Fabric K	TRB2010	$\frac{1}{2}$ yd.
Fabric L	TRB2002	$\frac{3}{8}$ yd.
Fabric M	PE421	$2\frac{1}{2}$ yd.

BACKING FABRIC

TRB2001 4 $\frac{1}{2}$ yds (*Suggested*)

BINDING FABRIC

Fabric **E** TRB2000 (*Included*)

CUTTING DIRECTIONS

$\frac{1}{4}$ " seam allowances are included.

WOF means width of fabric.

- Nine (9) $5\frac{1}{4}$ " squares from fabric **A**.
- Four (4) $4\frac{7}{8}$ " squares from fabric **A**.
- Thirteen (13) $5\frac{1}{4}$ " squares from fabric **B**.
- Six (6) $4\frac{7}{8}$ " squares from fabric **B**.
- Nine (9) $5\frac{1}{4}$ " squares from fabric **C**.
- Four (4) $4\frac{7}{8}$ " squares from fabric **C**.
- Ten (10) $5\frac{1}{4}$ " squares from fabric **D**.
- Five (5) $4\frac{7}{8}$ " squares from fabric **D**.
- Eight (8) $5\frac{1}{4}$ " squares from fabric **E**.
- Four (4) $4\frac{7}{8}$ " squares from fabric **E**.
- Seven (7) $1\frac{1}{2}$ " x WOF strips from fabric **E** (binding).
- Nine (9) $5\frac{1}{4}$ " squares from fabric **F**.
- Four (4) $4\frac{7}{8}$ " squares from fabric **F**.
- Nine (9) $5\frac{1}{4}$ " squares from fabric **G**.
- Five (5) $4\frac{7}{8}$ " squares from fabric **G**.
- Four (4) $5\frac{1}{4}$ " squares from fabric **H**.
- Three (3) $4\frac{7}{8}$ " squares from fabric **H**.
- Eight (8) $5\frac{1}{4}$ " squares from fabric **I**.
- Four (4) $4\frac{7}{8}$ " squares from fabric **I**.
- Eight (8) $5\frac{1}{4}$ " squares from fabric **J**.
- Four (4) $4\frac{7}{8}$ " squares from fabric **J**.
- Twelve (12) $5\frac{1}{4}$ " squares from fabric **K**.
- Five (5) $4\frac{7}{8}$ " squares from fabric **K**.
- Eleven (11) $5\frac{1}{4}$ " squares from fabric **L**.
- Five (5) $4\frac{7}{8}$ " squares from fabric **L**.
- Twenty five (25) $5\frac{1}{4}$ " squares from fabric **M**.
- Fifty three (53) $4\frac{7}{8}$ " squares from fabric **M**.
- Twelve (12) 2" x WOF strips from fabric **M**.

CONSTRUCTION

Sew all rights sides together with 1/4" seam allowance.

Half Square Triangle Method

- Take two (2) 4 7/8" squares .
- Draw a line diagonally from corner to corner using a mechanical pencil or frixion pen.
- Stitch 1/4" on each side from the drawn lines.
- Cut the pieces apart along the marked diagonal line.
- Press seams open and trim to a 4 1/2" perfect square.

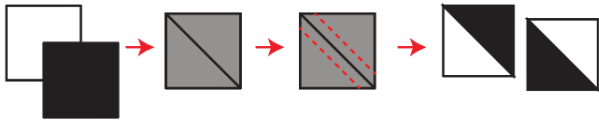


DIAGRAM 1

- Following the half square triangle instruction, follow the diagram below in order to create your blocks.

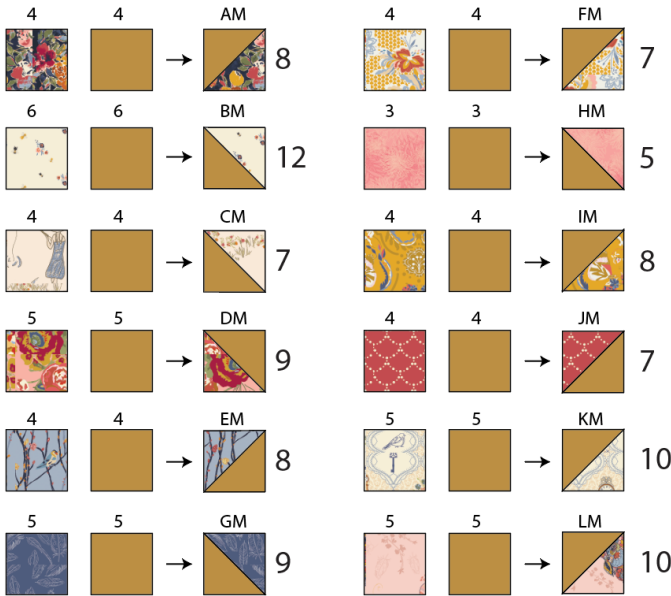


DIAGRAM 2

Quarter Square Triangle Construction

- Take one (1) 5 1/4" square and cut on the diagonal.

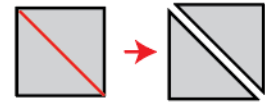


DIAGRAM 3

- Take two (2) 5 1/4" squares and cut them on both diagonals creating four (4) triangles.



DIAGRAM 4

- Take one triangle from each and one half square triangle and join them following the diagram below.
- Trim to 4 1/2" x 4 1/2".

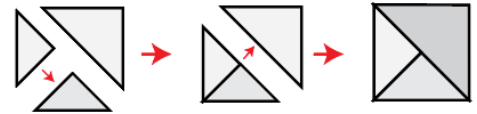
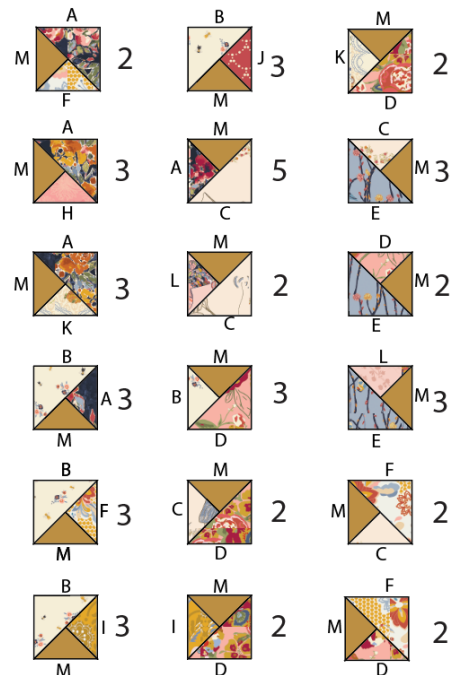


DIAGRAM 5

- Following the quarter square triangle instruction, follow the diagram below in order to create your blocks.
- You will have leftover triangles in which you will be able to use to complete other blocks.



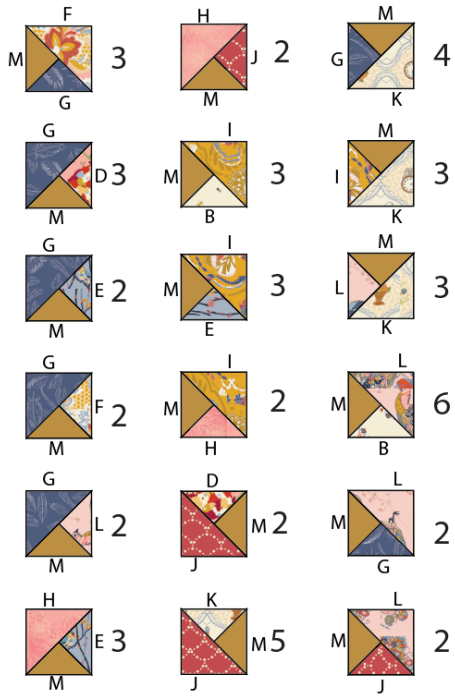


DIAGRAM 6

Hourglass Construction

- Take (2) 5¼" squares and cut them in four (4) triangles.
- Sew two (2) triangles together at a ¼" seam allowance and then the other two (2) triangles together.
- Then, join both pieces together, pin and sew at a ¼".
- Trim your block to 4½" x 4½".

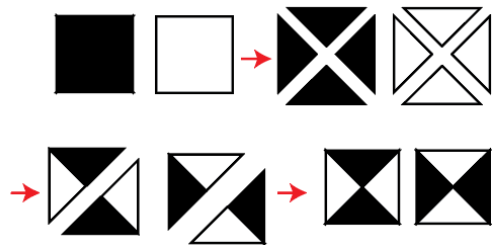


DIAGRAM 7

- Following the hourglass construction, follow the diagram below for each block assembly.
- Note that you will be able to use leftover triangles in order to complete other blocks.

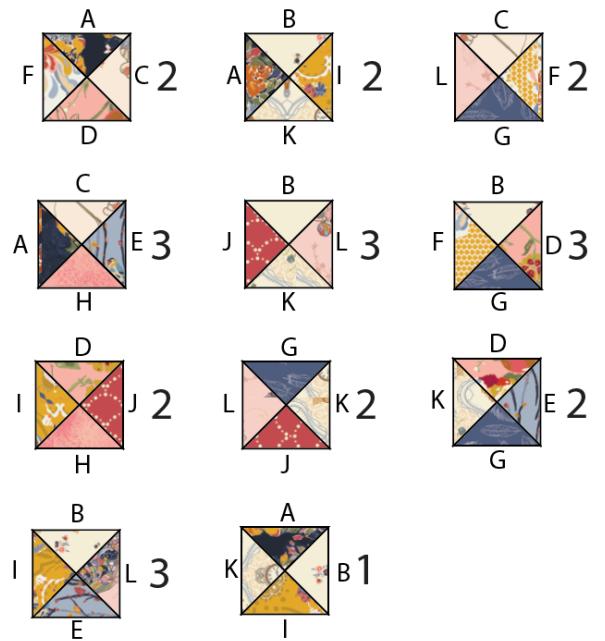


DIAGRAM 8

Block construction:

- Your block should measure 12½" x 12½".

Block 1 Construction:

- Take the following pieces in order to construct three (3) Block 1.
- Sew by rows and then sew the rows together.

(3) AM

(3) CM

(3) EM

(3) HM

(3) AHM

(3) CAM

(3) EBM

(3) HEM

(3) ACEH



DIAGRAM 9

